

# MAGNUS™ Impact Etching Machine

## D-Graver series

The application area of this equipment is quite wide: ranging from ritual business to artistic finish and fabrication of picturesque elements.

*Application unspecified image on flat hard surface by impact engraving method*



**MAGNUS 1**  
**MAGNUS 3**

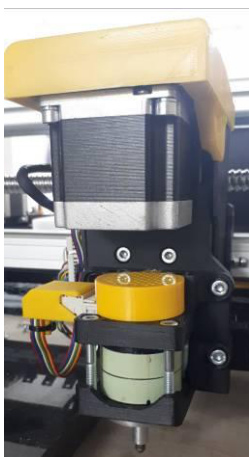


**MAGNUS 5**



**MAGNUS 7**  
**MAGNUS 9**

- ✓ High speed engraving of high quality
- ✓ Automatic noncontact system of keeping of working gap
- ✓ Support of off-line operation.
- ✓ Full support for working with **mobile** and stationary devices via the web interface.
- ✓ Full machine control and engraving start without using a PC from any mobile device
- ✓ Studio of projects DGStudio™ (for OS Windows®) preparation
- ✓ Interfaces: Wi-Fi – host, WiFi - client, Ethernet
- ✓ Customary high quality and reliability of produced machines



**Engraving head** of the new regeneration enables to engrave images up 25% faster in comparison with machines of the previous generation.

**Increased impact force** allows you to get images in fewer passes.

**Quick-released attachment** of engraving needle enables to replace needles in matter of seconds, not using auxiliary tools.

**Feedback system** of engraving head provides automatic tuning of impact force in the course of operation.

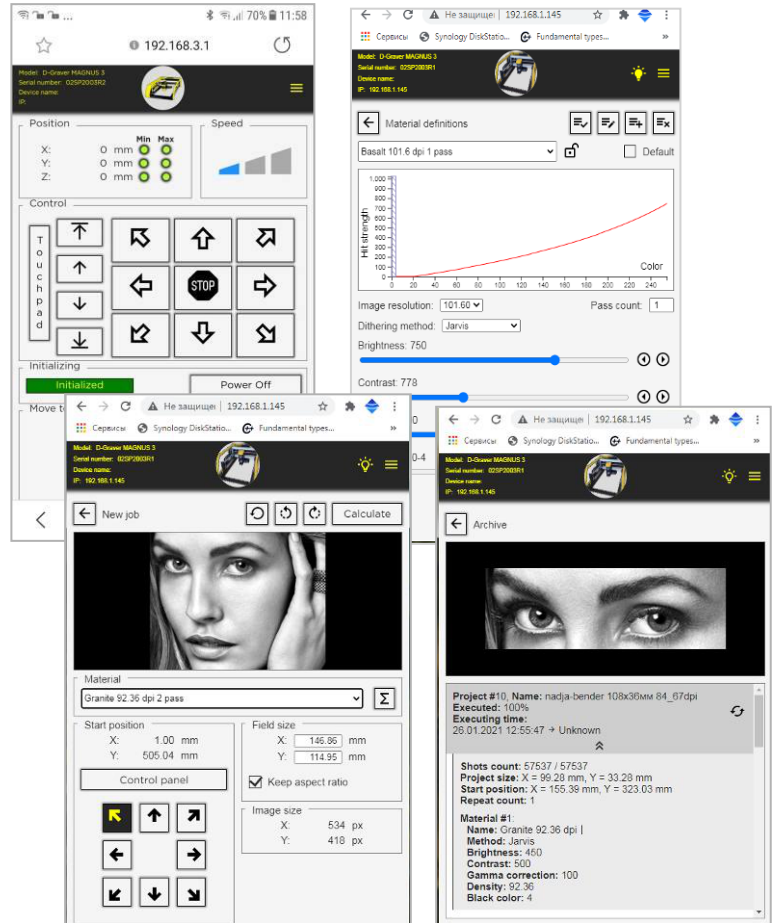
**Wide range of final image density** varying from 50 dpi to over 650 dpi enables production of both: coarse-grain as well as highly-detailed typeset quality images.

**Working Gap Intelligent Stabilization System** (stabilizer) has no analogues to be applied on any other similar equipment. Stabilizer has no mechanic units that result in significant increase of reliability, accuracy and durability of the machine in general. Operation of the stabilizer is entirely "transparent" for the machine operator, that considerably reduces handwork and excludes "Human factor" when engraving images.

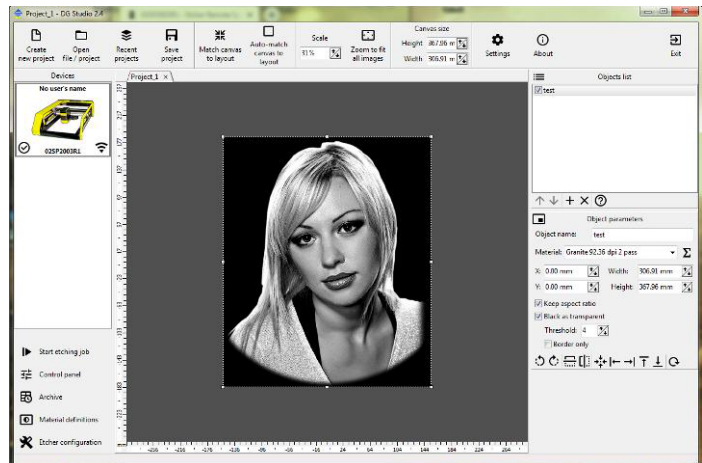


**The remote control panel** is a standard digital mini keyboard. Provides basic functions for moving the machine mechanisms with step speed control. Easy to use and easy to replace in case of damage. As a remote control it is possible to use a standard USB keyboard.

**Own machine control web page** provides full control from any stationary or mobile device via any browser



**Studioof engraving projects Studio**(for OS Windows®) preparation enables to promptly and visually prepare an engraving model, set all the required parameters and performs engraving using one program.



**Connection of the machine to your local network** through WiFi or cable Ethernet enables to control the machine from any working place even if it is located in another town (Internet connection is required).

**Off-line operation of the machine** automatic downloading of the whole project in the machine enables to completely detach the machine from external control. You can at any time re-connect to the machine from the computer and obtain the full control and complete information



£7,495



**MAGNUS 1**

£8,995



**MAGNUS 3**

£10,495



**MAGNUS 5**

£11,995



**MAGNUS 7**

£13,495



**MAGNUS 9**

|  |  |   |  |   |   |
|--|--|---|--|---|---|
| Process material   | Granite, gabbro, basalt, marble, glass, etc.   |   |  |   |   |
| Maximum dimensions of processed area per one installation  | 300 mm x 410 mm / 11.81" x 16.14"  | 400 mm x 620 mm / 15.75" x 24.41"                 | 1010 mm x 500 mm / 39.76" x 19.68"                       | 1400 mm x 700 mm / 55.11" x 27.55"                        | 1600 mm x 1000 mm / 63" x 39.37"                          |
| Maximum dimension of a work piece to be processed when placing a work piece inside the machine     | 640 mm x 390 mm x 30 mm / 25.19" x 15.35" x 1.18"  | 840 mm x 490 mm x 30 mm / 33.07" x 19.29" x 1.18" | width 1230 mm / 48.43"                                   | width 1630 mm / 64.17"                                    | width 1830 mm / 72.04"                                    |
|  |  |   | length– not limited<br>Requires trolley (not included)   |   |   |
| Maximum dimensions of processed area per one installation when placing the machine on a work piece | unlimited  |   | not applicable   |   |   |
| Allowable non-parallelism of machine to the surface being processed                                | 5 mm on 300 mm at most   |   |  |   |   |
| Performance  | not less 250 shots in sec  |   |  |   |   |
| Connection interfaces  | WiFi - host, Wi-Fi - client, Ethernet  |   |  |   |   |
| Self-driven mode   | <b>Applied.</b> At start of engraving an image is completely uploaded to the machine, whereupon the control computer may be shut off |   |  |   |   |
| Prevention of unexpected shutdown  | <b>Applied.</b> Upon restoration of power supply the machine may resume operation from the breakpoint.                               |   |  |   |   |
| Overall dimensions of the machine  | 585 x 760 x 240 mm   | 687 x 947 x 240 mm                                | 900 x 1300 mm x Height 700 mm ± 30 mm / 1.18" adjustment | 1032 x 1710 mm x height 700 mm ± 30 mm / 1.18" adjustment | 1332 x 1910 mm x height 700 mm ± 30 mm / 1.18" adjustment |
| Machine weight   | 20.5 kg  | 28 kg   | 56 kg  | 62 kg   | 80 kg   |
| Supply voltage   | 110-240W, 50±60 Hz   |   |  |   |   |
| Power demand   | Not more than 150W   |   |  |   |   |
| Warranty   | 1 year   |   |  |   |   |

\* one inch = 25.4 mm

